



1933 ACT 69 SECOND CLASS TOWNSHIP CODE OF PENNSYLVANIA

SECTION 607. DUTIES OF SUPERVISORS.--THE BOARD OF SUPERVISORS SHALL:

(1) BE CHARGED WITH THE GENERAL GOVERNANCE OF THE TOWNSHIP AND THE EXECUTION OF LEGISLATIVE, EXECUTIVE AND ADMINISTRATIVE POWERS IN ORDER TO ENSURE SOUND FISCAL MANAGEMENT AND TO SECURE THE HEALTH, SAFETY AND WELFARE OF THE CITIZENS OF THE TOWNSHIP.



Table 4.3.2 Staffing and Response Time

Demand Zone^a	Demographics	Minimum Staff to Respond^b	Response Time (minutes)^c	Meets Objective (%)
Urban area	>1000 people/mi ² (2.6 km ²)	15	9	90
Suburban area	500–1000 people/mi ² (2.6 km ²)	10	10	80
Rural area	<500 people/mi ² (2.6 km ²)	6	14	80
Remote area	Travel distance ≥ 8 mi (12.87 km)	4	Directly dependent on travel distance	90
Special risks	Determined by AHJ	Determined by AHJ based on risk	Determined by AHJ	90

^aA jurisdiction can have more than one demand zone.

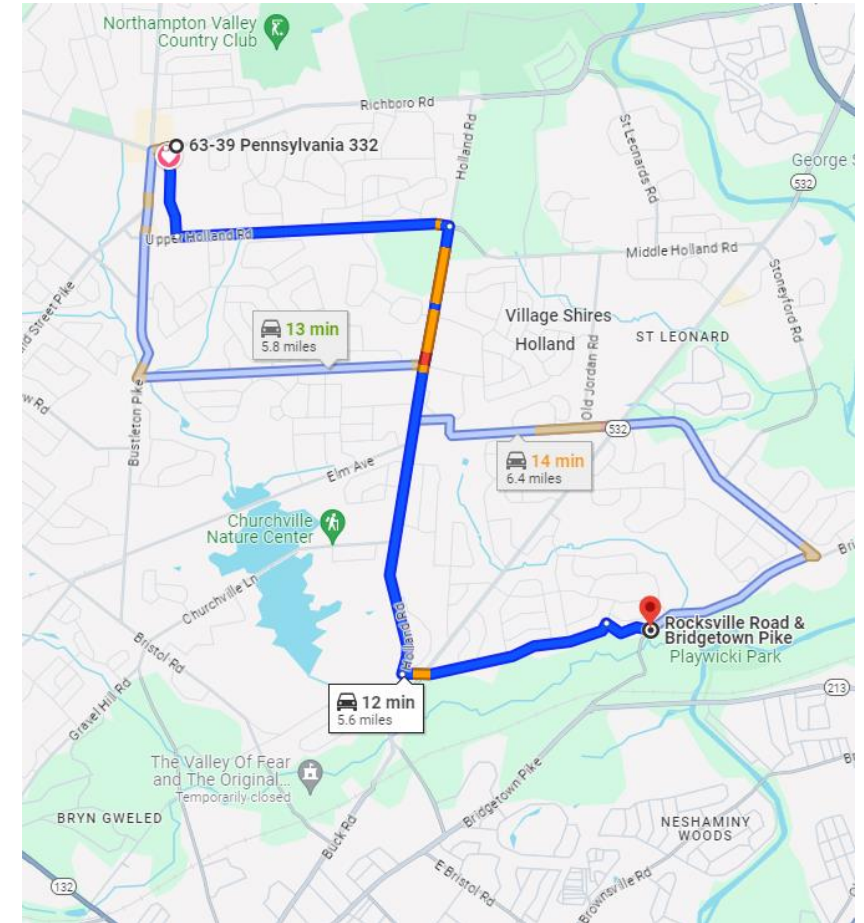
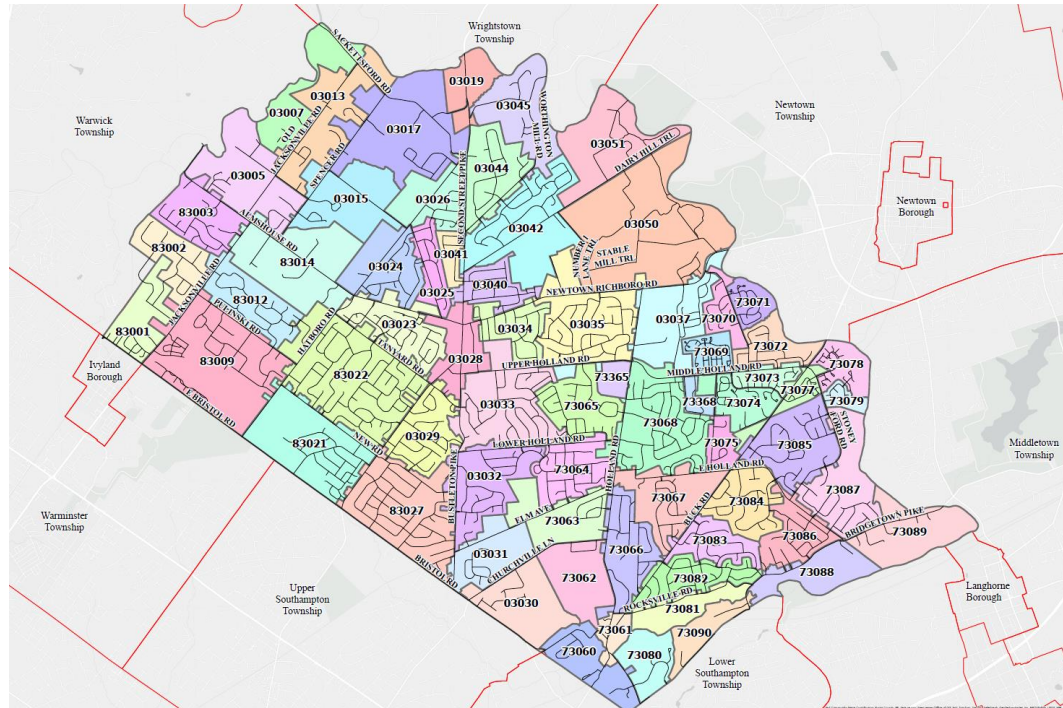
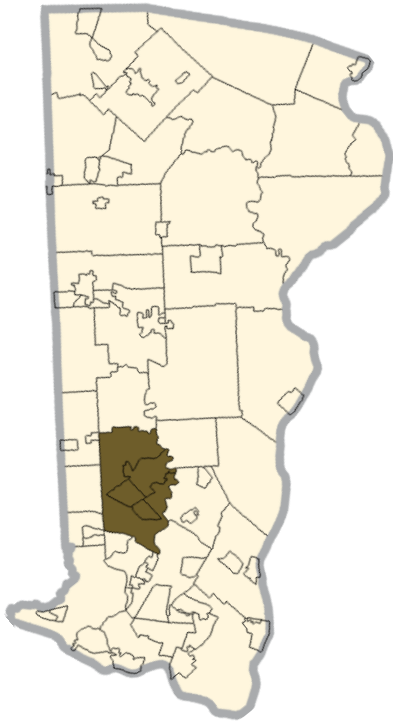
^bMinimum staffing includes members responding from the AHJ's department and automatic aid

^cResponse time begins upon completion of the dispatch notification and ends at the time interval shown in the table.



NORTHAMPTON TOWNSHIP

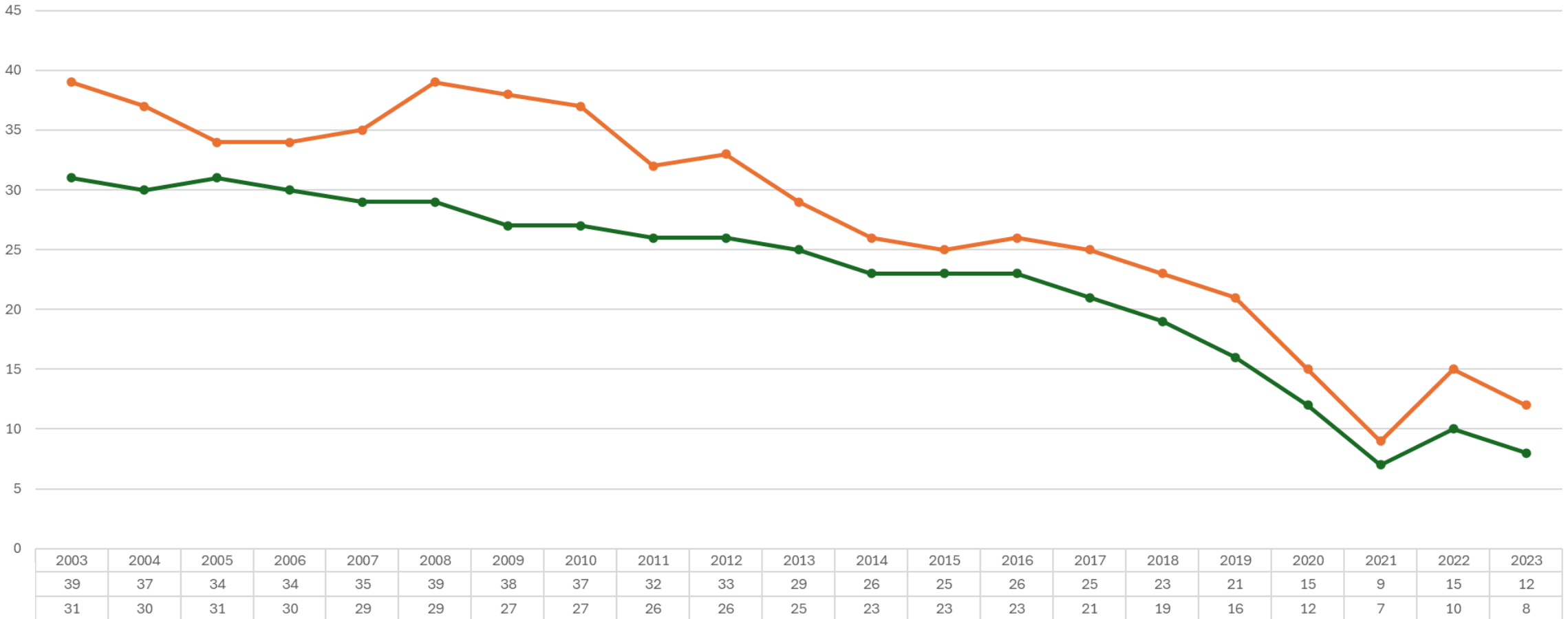
~ 27 Square Miles
~43000 population
15000 properties
Average assessment \$39,000





NTFD VOLUNTEER STATISTICS 2003-2023

NTFD Volunteer Statistics

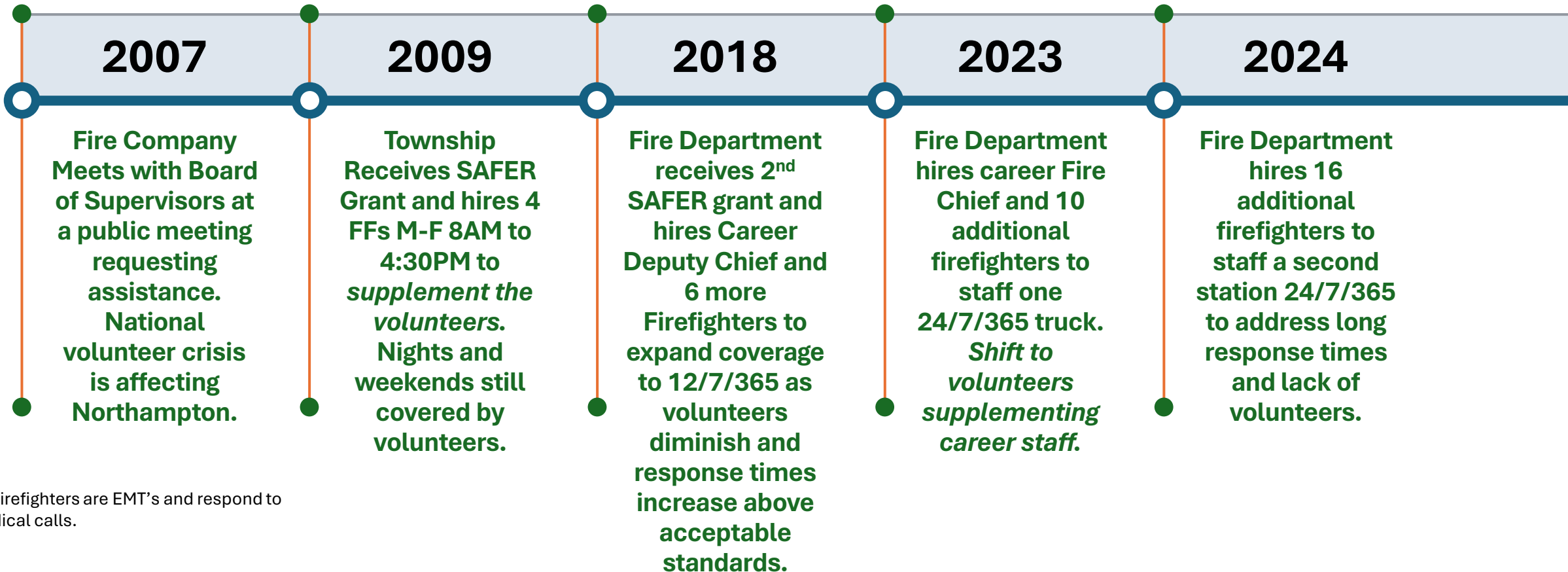


● Total # of made 25% or more
 ● Total # of qualified out of 25%

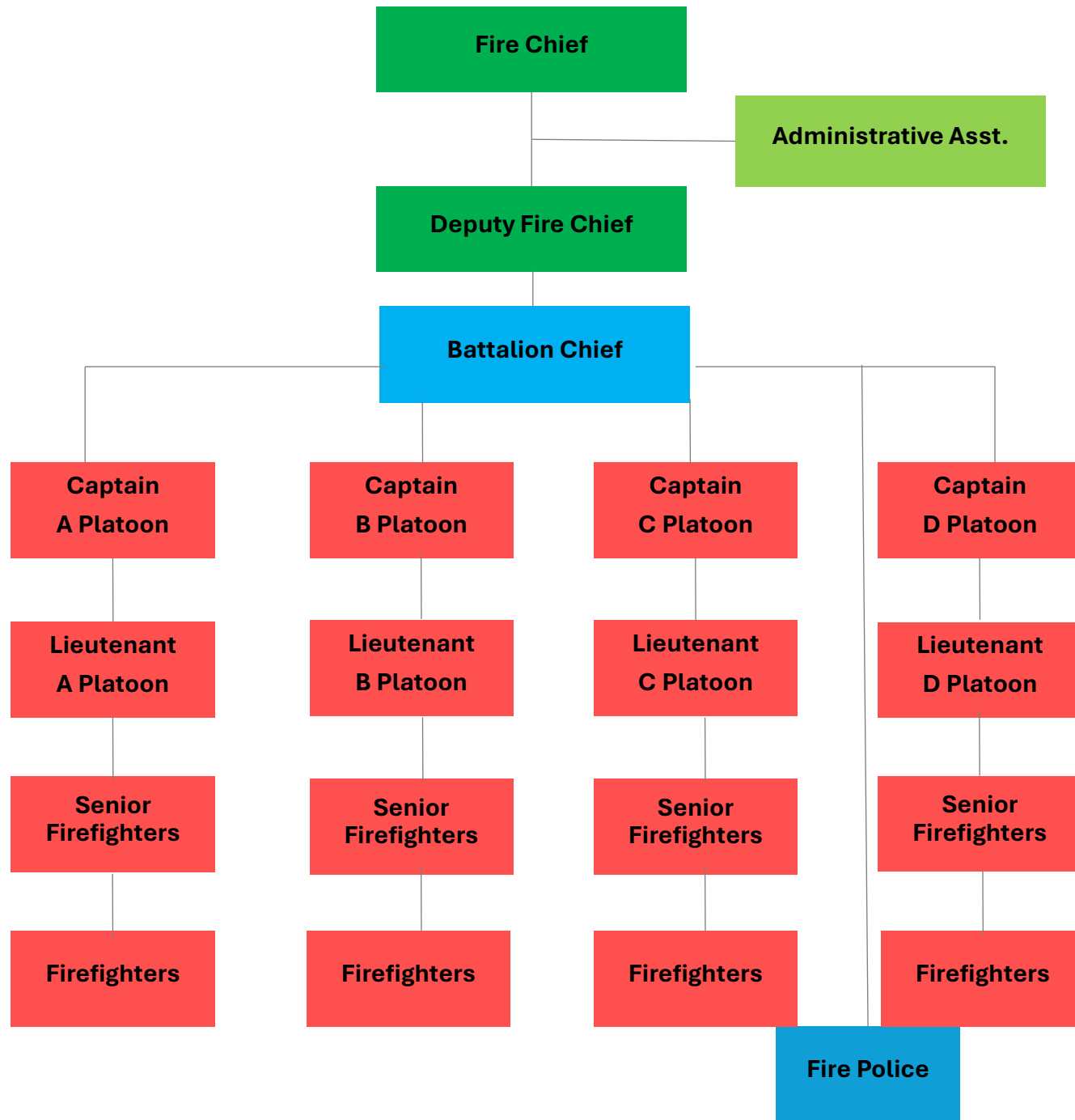


Timeline of Staffing Fire Department

2007-2024



All Firefighters are EMT's and respond to medical calls.





“Change is hard in the beginning, messy in the middle and great in the end”

-Robin Sharma



“Going to quit”

“Hurt our service”

**MYTHS OF
TRANSITIONING
TO A
COMBINATION
FIRE DEPT.**

“We’ll just get more
volunteers”

“More apparatus will
help the problem”

“Stipends will solve
our problem”

“We don’t have a
problem”



“We don’t have a problem” ???

“The number of volunteers today is down significantly from 1984, when 897,750 volunteer firefighters were reported. This decline of over 220,850 volunteers took place while the united states population grew from nearly 236 million to over 331 million in the same time frame, indicating that volunteerism in the fire and emergency services has not kept pace with population growth.” *RETENTION AND RECRUITMENT FOR THE VOLUNTEER EMERGENCY SERVICES FEMA MAY 2023*

“For the 48 Bucks County responding departments, there are only 776 interior firefighters or 68 percent of the total active firefighters. This translates roughly to an average of 16 interior firefighters per department responding to the survey.” *BCPC 21-FEBRUARY-2021*

“Bucks county is facing a shortage of approximately 770 active firefighters. This averages approximately 12 firefighters per each of the 62 departments that serve the residents of the county.” *BCPC 21-February-2021*

“This past year the number of volunteer firefighters decreased to the lowest estimate since NFPA began reporting this statistic in 1986...” *NFPA U.S. FIRE DEPARTMENT PROFILE 2017*

“The state of volunteer firefighting is in jeopardy. While volunteerism may survive, it will vary widely from municipality to municipality and from region to region. More importantly, it is likely to provide an inadequate level of protection due to the ever-dwindling number of new volunteers entering the ranks” *BCPC 21-February-2021*



FIRE DEPARTMENT QUESTIONS FROM ELECTED OFFICIALS

1. How does your department define an active member? i.e. number of calls, percentage of calls, etc.
2. How many qualified interior firefighters does your department have? Interior means trained, certified, willing, and able to wear an Airpack. What are the demographics (age) of these firefighters?
3. What is the average on-scene response time, with the proper number of interior qualified firefighters, your department will commit to the municipality? i.e. Number of people on a single piece of apparatus.
4. Does your department have a system in place that requires your volunteers to commit to respond for a given period? Ex: Stipend program to sign-up for an 8-hour shift (in station or from home).
5. On a house or building fire, how many trucks from your department can you properly staff with interior qualified firefighters (minimum of 4) within the national standard for response times (see below chart)? Are there any time-of-day limitations?

Table 4.3.2 Staffing and Response Time

Demand Zone ^a	Demographics	Minimum Staff to Respond ^b	Response Time (minutes) ^c	Meets Objective (%)
Urban area	>1000 people/mi ² (2.6 km ²)	15	9	90
Suburban area	500–1000 people/mi ² (2.6 km ²)	10	10	80
Rural area	<500 people/mi ² (2.6 km ²)	6	14	80
Remote area	Travel distance ≥ 8 mi (12.87 km)	4	Directly dependent on travel distance	90
Special risks	Determined by AHJ	Determined by AHJ based on risk	Determined by AHJ	90

^aA jurisdiction can have more than one demand zone.
^bMinimum staffing includes members responding from the AHJ's department and automatic aid
^cResponse time begins upon completion of the dispatch notification and ends at the time interval shown in the table.



MORE INFORMATION

<https://www.buckscounty.gov/DocumentCenter/View/3514/The-Future-of-Bucks-Countys-Fire-Services>

<https://www.usfa.fema.gov/downloads/pdf/publications/retention-and-recruitment-for-volunteer-emergency-services.pdf>

<https://pehsc.org/wp-content/uploads/2014/05/SR-6-REPORT-FINAL.pdf>

<https://www.nvfc.org/wp-content/uploads/2024/03/fire-service-fact-sheet-updated-032024.pdf>